



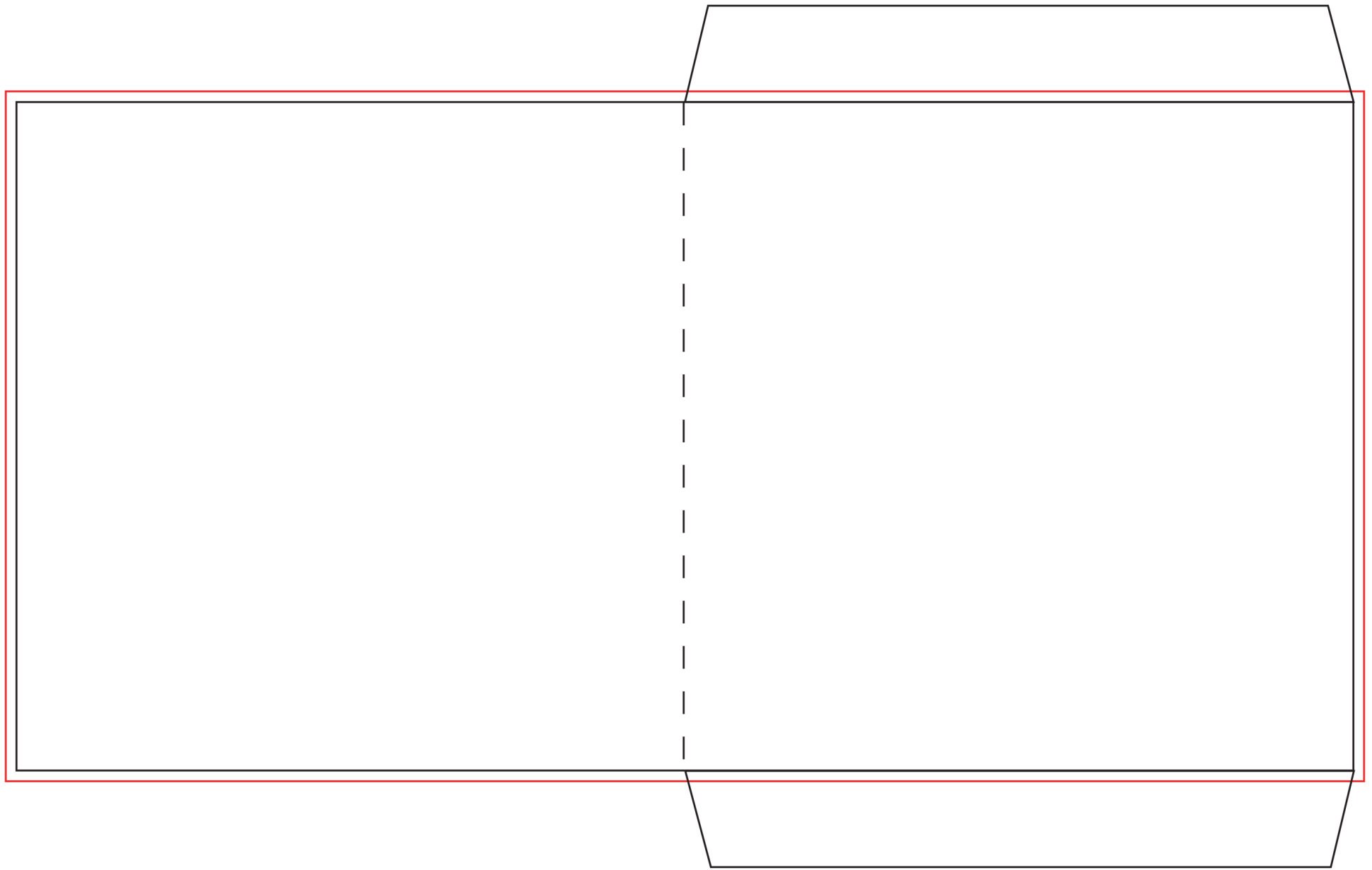
## Prior to sending in artwork files do the following:

- Step 1: Convert to CMYK (If in RGB color mode)
- Step 2: Rasterize text layers - Eliminates font problems
- Step 3: Turn off content guide layers - Leave crop marks intact
- Step 4: Save copy of final 300dpi artwork file - Preferred file format: .TIFF, PDF, JPEG
- Step 5: Send us the final file - Or, call for FTP instructions

## Questions? Contact us:

952-303-5936

[discburn77@gmail.com](mailto:discburn77@gmail.com)



Please build artwork out to the **red** lines.  
The printed piece will be cut on the **black** lines  
and folded on the dotted lines.